



## **USASF IMAGE POLICY Cheer Teams**

Judges reserve the right to assess warnings and/or deductions when a team's choreography, uniform, make up, bows etc. do not meet the standards of 'appropriate' as described in this policy.

### **COVER UP GUIDELINES**

*Cover Up goes into effect with the 2012-2013 season.*

Athletes with non-full top uniforms must wear a t-shirt or other suitable cover up over their uniforms unless they are in the warm-up area, traveling as a group directly to or from the warm up area, or on the performance stage.

### **APPROPRIATE CHOREOGRAPHY**

*APPROPRIATE CHOREOGRAPHY goes into effect with the 2012-2013 season.*

All facets of a performance/routine, including both choreography and music selection, should be appropriate and suitable for family viewing and listening.

Examples of inappropriate choreography may include, but are not limited to, movements such as hip thrusting and inappropriate touching, gestures, hand/arm movements and signals, slapping, positioning of body parts and positioning to one another. Music or words unsuitable for family listening, which includes, but is not limited, to swearwords and connotations of any type of sexual act or behavior, drugs, explicit mention of specific parts of the body torso, and/or violent acts or behavior are other examples of inappropriate choreography. Removing improper language or words from a song and replacing with sound effects or other words may still constitute 'inappropriate.'

Music or movement in which the appropriateness is questionable or with which uncertainty exists should be assumed by the coach to be inappropriate and removed as to not put their team in an unfortunate situation.

### **MAKEUP AND OTHER**

*MAKE UP AND OTHER goes into effect with the 2013-2014 season.*

#### **MAKEUP**

Makeup should be uniform and appropriate for both the performance and the age of the athletes. Face/Eyelid Rhinestones are not allowed. False eyelashes are allowed but may not be decorated in rhinestones or additional jewelry.

#### **BOWS**

Bows should not be excessive in size (acceptable bows are generally no more than 3" in width) and shouldn't be a distraction to the performance. Bows should be worn in a manner to minimize risk for the participants, should be adequately secured and should not fall over the forehead into the participants' eyes or block the view of the participant while performing.



## **APPROPRIATE UNIFORM**

*APPROPRIATE UNIFORM goes into effect with the 2015-2016 season.*

### **GENERAL UNIFORM GUIDELINES**

No risqué, sexually provocative or lingerie looking or inspired uniform or garments allowed. All uniform pieces should adequately cover an athlete and must be secured to eliminate any possible wardrobe malfunction. Appropriate undergarments must be worn.

In addition to the below specific guidelines, athletes must also consider that a combination of uniform pieces may also deem a uniform appropriate or inappropriate. ALL garments must properly cover the athlete and the athlete's undergarments during the routine.

### **UNIFORM SKIRT/SHORTS GUIDELINES**

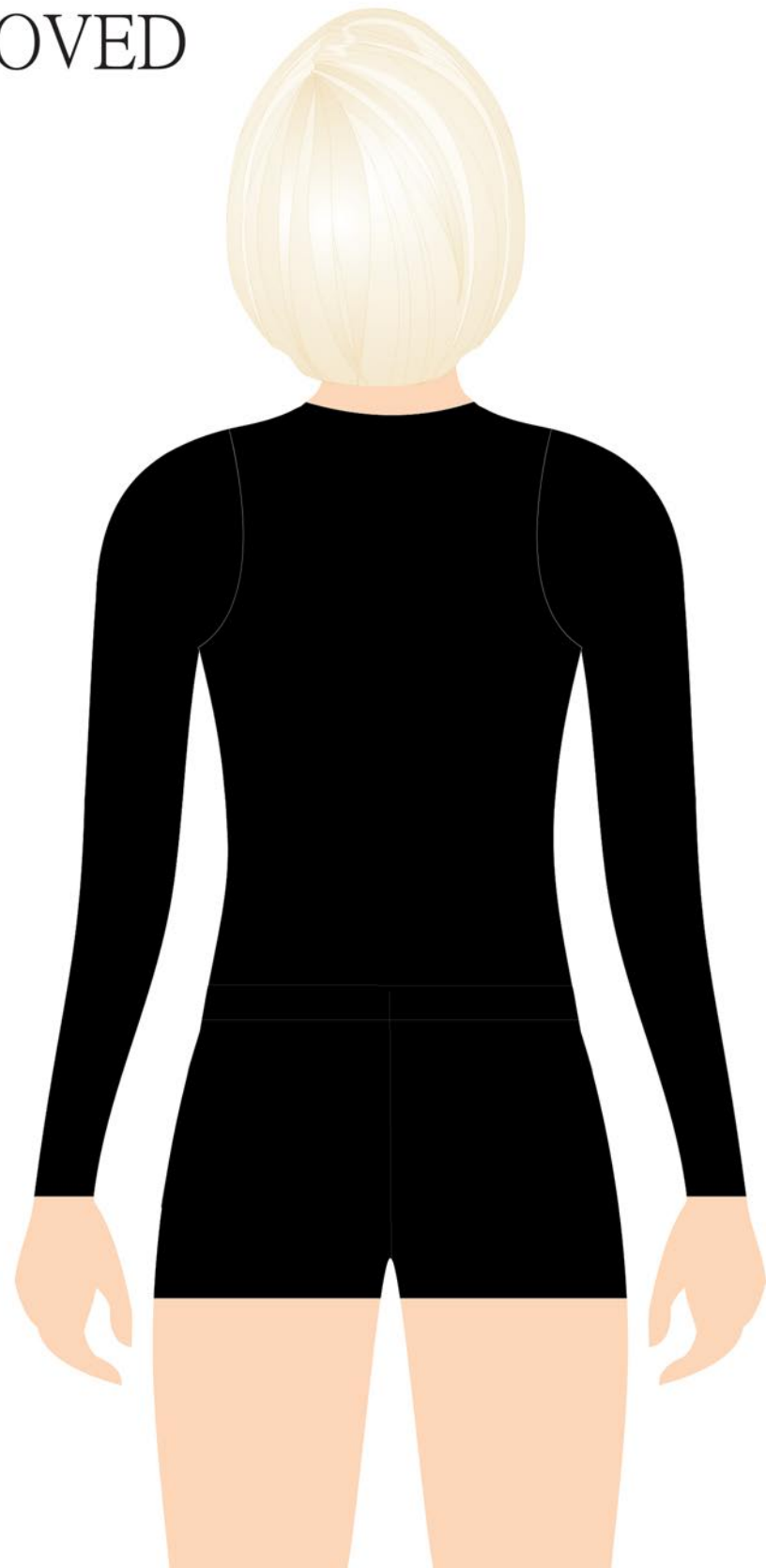
When a skirt is worn as part of the uniform, briefs under the skirt are required. The skirt must fully cover the hips. The skirt must completely cover the briefs and must fall at least 1 inch below briefs (regular and boy cut briefs). When shorts are worn as part of the uniform, there must be a minimum of a 2" inseam.

### **UNIFORM TOP GUIDELINES**

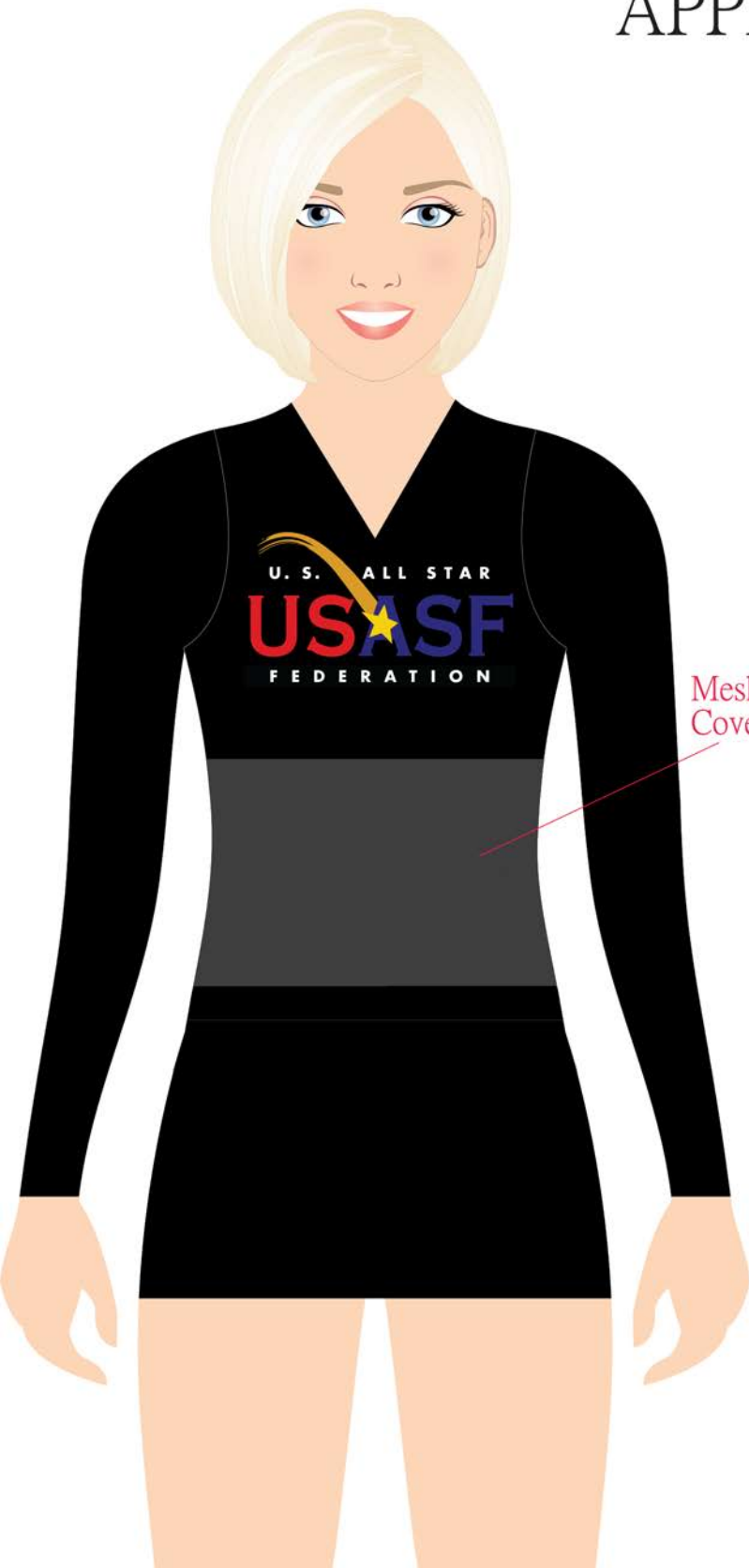
Uniform tops may not include an exposed midriff (crop top) except when worn by athletes competing in Senior divisions. Uniform tops must be secured by straps or material over at least one shoulder or around the neck (tube tops are not allowed).

Judges reserve the right to assess warnings and/or deductions when a team's choreography, uniform, make up, bows etc. do not meet the standards of 'appropriate' as described in this policy.

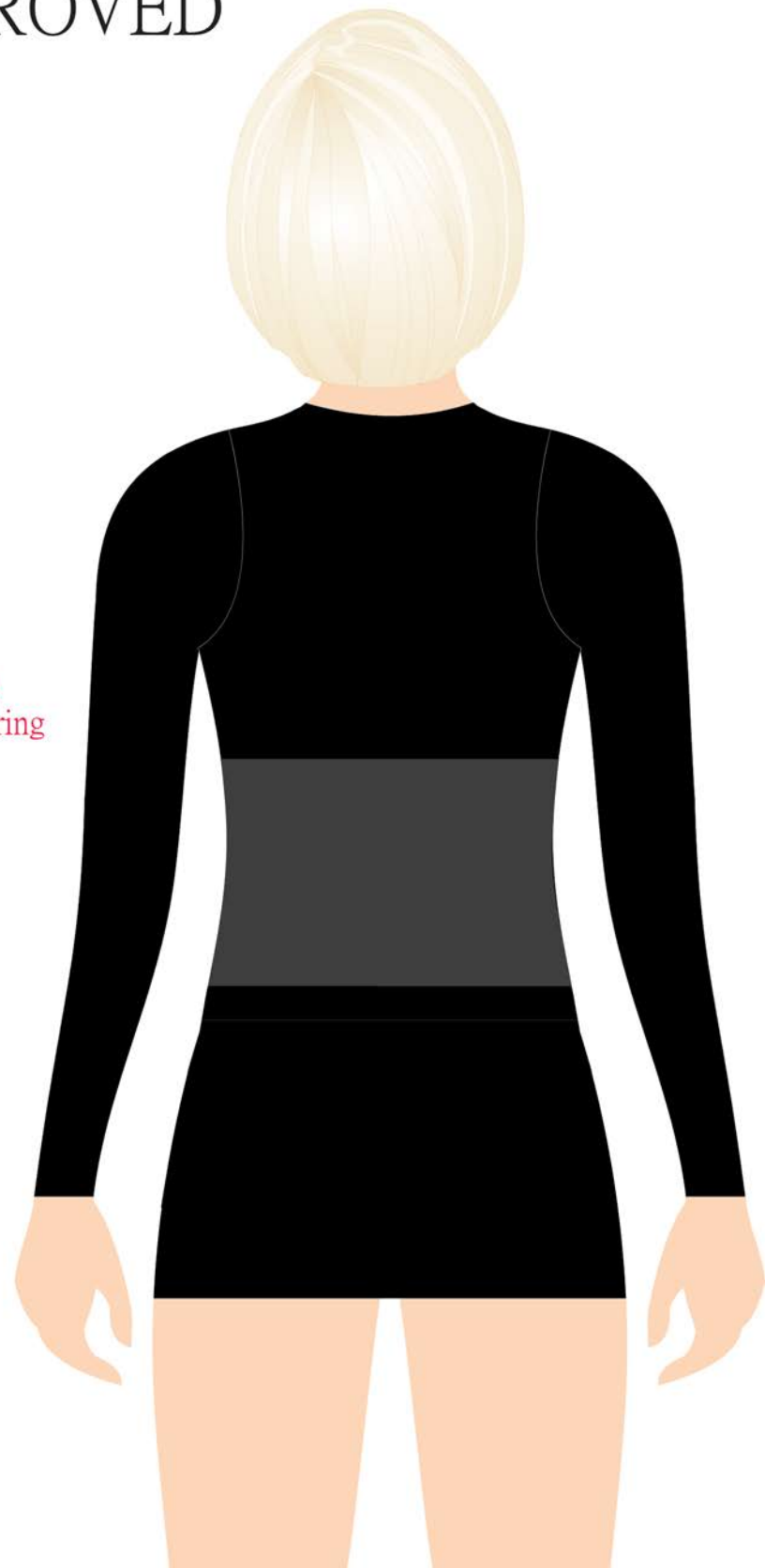
APPROVED



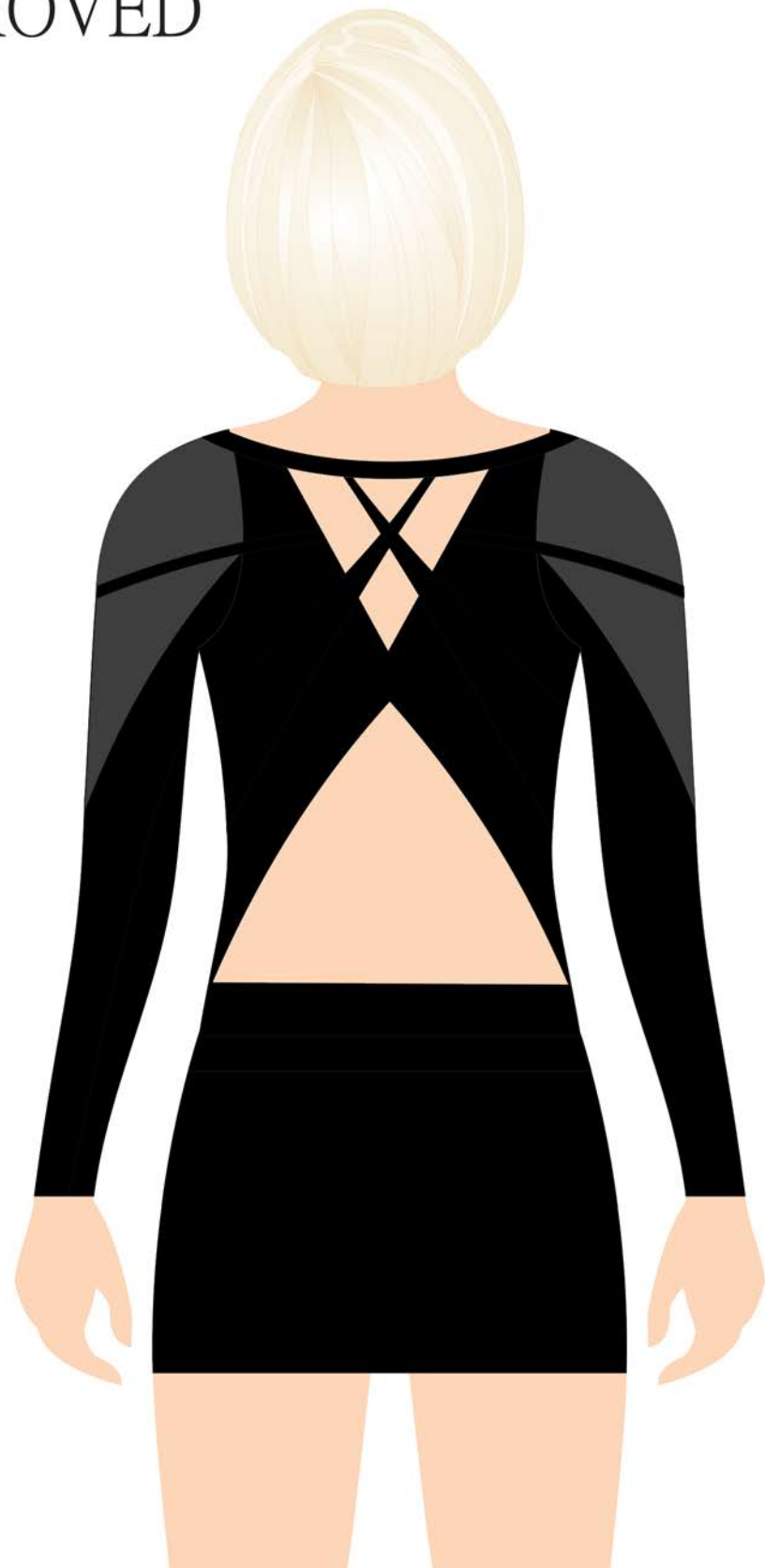
APPROVED



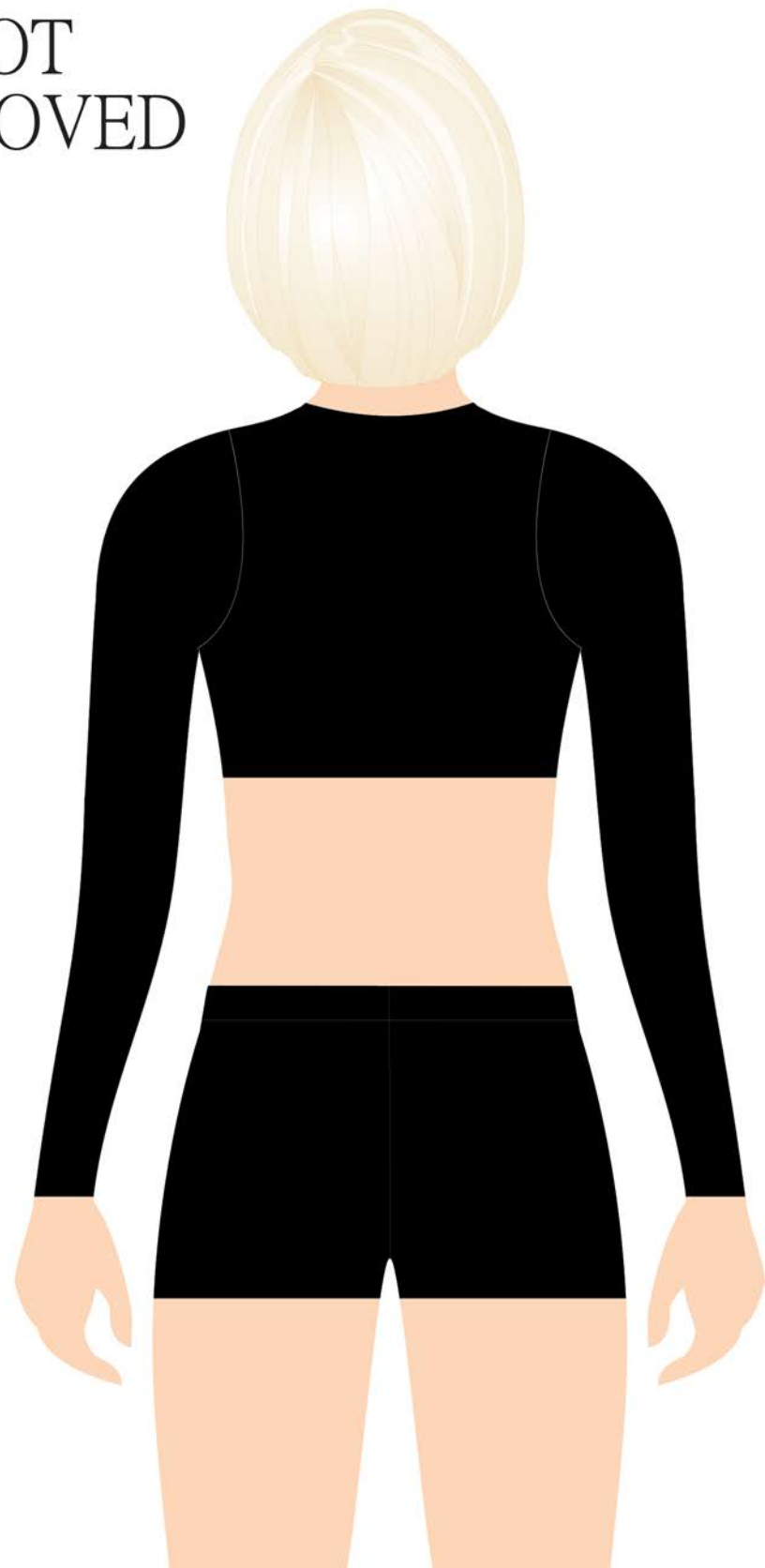
Mesh  
Covering



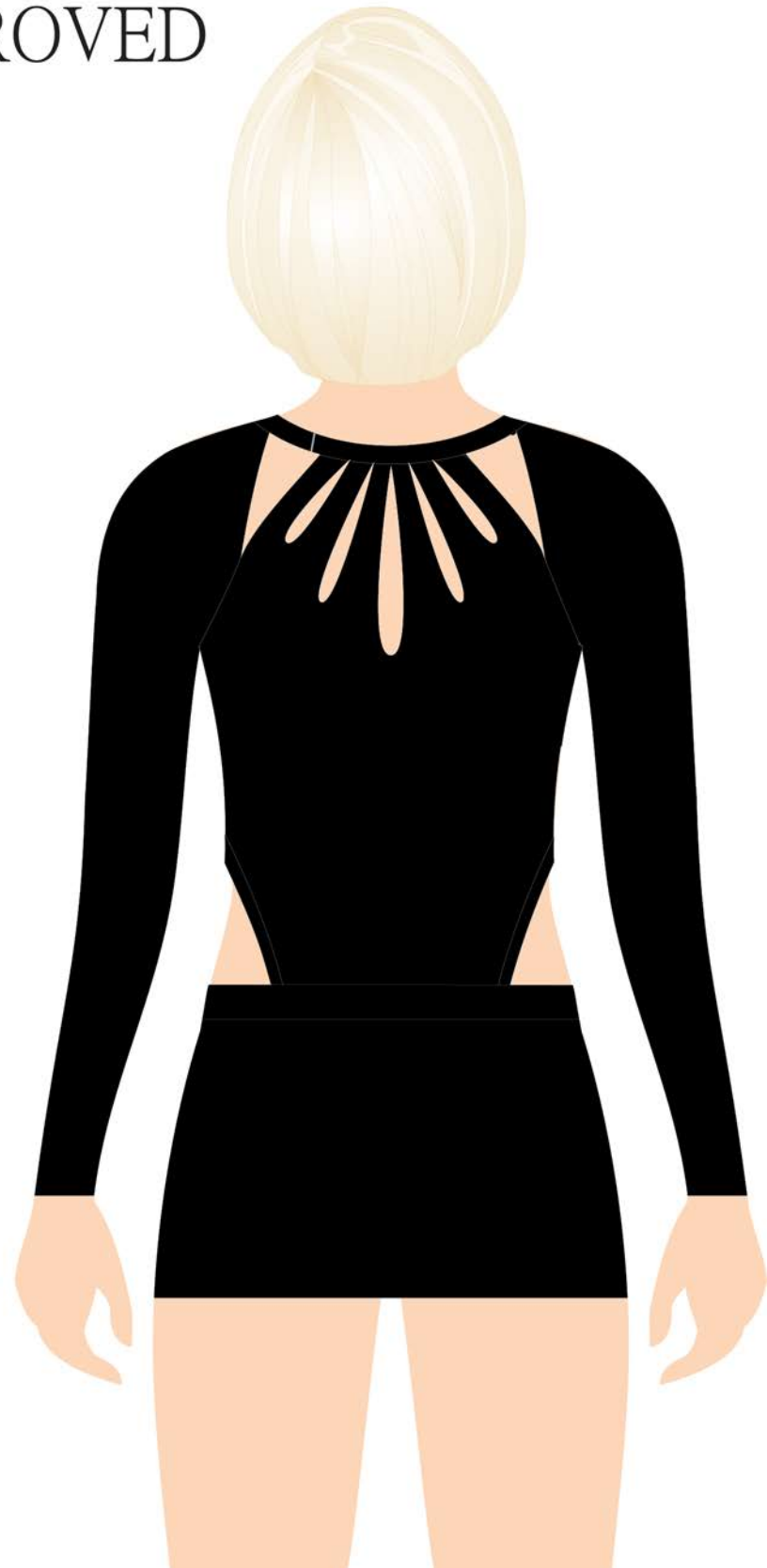
APPROVED



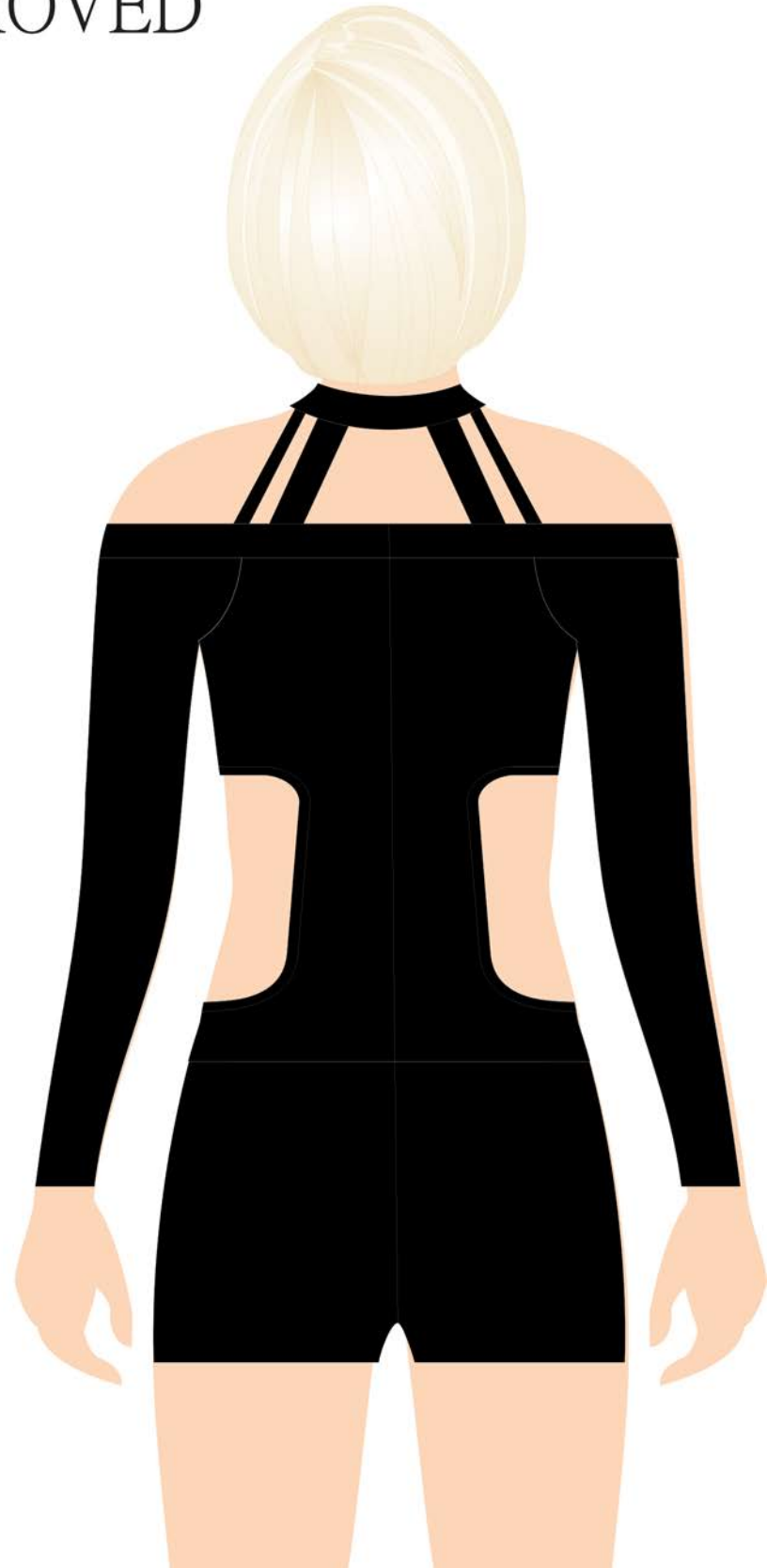
NOT  
APPROVED



NOT  
APPROVED



NOT  
APPROVED





NOT APPROVED

